

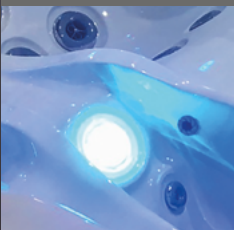
WHIRLPOOL CANTANIA



GOLD SERIE
MODELL G1100
225 X 100 X 78 cm



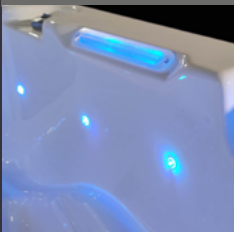
Unterwasserscheinwerfer



Ozonator



Wasserlinienbeleuchtung



Xtreme Isolation



**WATERWAVE SPAS®**

www.waterwave.de

WHIRLPOOL CANTANIA GOLD SERIE



TECHNISCHE DATEN

Maße:	225 x 100 x 78 cm
Leergewicht:	175 kg
Wasserkapazität:	789 l
Gesamtgewicht:	964 kg
Verkleidungsfarbe:	siehe Übersicht
Wannenfarbe:	siehe Übersicht

LED BELEUCHTUNG

LED Unterwasserscheinwerfer:	inklusive
Wasserlinie:	inklusive

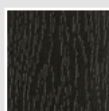
DETAILS

Sitzplätze:	2
Wasserdüsen:	33
Isolierung:	Xtreme Isolation
Rahmen:	Edelstahlrahmen
WPC Verkleidung:	inklusive
Steuerung:	Balboa
Bedienfeld:	TP600
Wasserpumpe:	1 x 3 PS I-stufig
Ozonator:	inklusive
UV Desinfektion:	optional
Filter:	1 x 50 sq Ft.
Wasserablass:	inklusive
Heizung:	3 KW Balboa
Elektrische Anforderungen:	3 Phasen 16 Ampere, 400 Volt

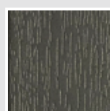
OPTIONAL

- WiFi Control System
- UV Desinfektion
- Waterwave Clear Saltsystem
- Vorbereitung externer Zugang (Bsp. Luft/Wärmepumpe)

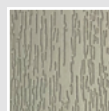
VERKLEIDUNGSFARBEN



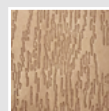
Black



Dark Grey

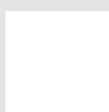


Light Grey



Dark Brown

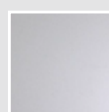
WANNENFARBEN



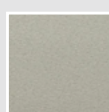
Pure White



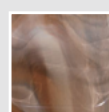
Silver Marble



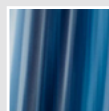
White Pearl



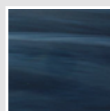
Gypsum



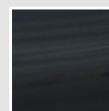
Mediterr. Sunset



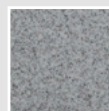
Ocean Wave



Summer Sapphire



Midnight Opal



Sahara